



Dear Parents and Carers,

At the eleventh hour of this eleventh month, our school followed the national Act of Commemoration with two minutes' silence. We did this by beginning a PowerPoint just before 11am which played The Last Post, and there followed a series of pictures that allowed pupils to visualise aspects of The Battle of Britain and The Blitz. These events of World War II affected both civilians and the armed services, both suffering casualties.



We use a visual presentation during the national silence as it can be hard to know what to do during that time and the photographs give a focus for pupils' thinking. The end of the silence is marked by Reveille, which is the bugle sound that was played to awaken troops after a night's rest – a sort of alarm call in the morning! For Christians, this is the call to the soldiers who have died to rise in the glory (of the morning) to be with the risen Christ.



Additionally, the senior pupils, lead by the Head Boy and Head Girl, represented Walkwood at the town's Act of Remembrance at Redditch's War Memorial. It is appropriate that people of every age declare 'We will remember them'.

Live like free people, and do not use your freedom as an excuse for doing evil. Instead, be God's servants.

1 Peter 2:16

We're celebrating Maths Week England by taking part in a friendly times tables (and division) competition. The competition runs from 07:30 GMT Monday 14th November to 19:30 GMT Wednesday 16th November. It's all done online via [Times Tables Rock Stars: Play \(trockstars.com\)](https://trockstars.com). In the spirit of the competition, please do not play on the children's behalf, but by all means encourage and support them to the extent that it doesn't cause high stress levels or impact on family plans.



Rev. C. Leach, *Principal*

**This week's theme was:  
Remembrance**

'See the home of God is among mortals. He will dwell with them; they will be his peoples, and God himself will be with them.; he will wipe every tear from their eyes. Death will be no more; mourning and crying and pain will be no more, for the first things have passed away.' And the one who was seated on the throne said, 'See, I am making all things new.'

Revelation 21: 3-5

Dear Lord,

As we remember the days of war over 100 years ago, we pray that you will fill our hearts with humility and hope. We know that you conquer all things and we pray that you are with those who are remembering people today, and those who are in war today. We pray for your protection of them and your love over them, that they will feel safe in your arms.

Amen.

**Whole school Attendance**

95.14%

**Whole School Target**

96.0%

**31.10.2022 to 04.11.2022**

Year 5 — 95.35%

Year 6 — 96.49%

Year 7 — 95.57%

Year 8 — 92.89%



## For the week ahead

<b>The Fruit of Faith is:</b>	<b>Achievement</b>	At last I have seen what is good and beautiful: It is to eat and drink and to enjoy the good in all our hard work under the sun during the brief lives God gives us. That is our lot in life. <i>Ecclesiastes 5:18</i>
<b>The assembly theme will be:</b>	<b>Making peace</b>	Let's keep on pursuing those things that bring peace and that lead to building up one another. <i>Romans 14:19</i>

### We ask your thoughts and prayers in the week ahead for:

<b>The weekend</b>	remembering those at war, and others who try and keep the peace	<b>Monday</b>	the new people in government in the USA
<b>Tuesday</b>	times tables memory recall	<b>Wednesday</b>	the staff at the Alexandra Hospital
<b>Thursday</b>	the local churches and community centres	<b>Friday</b>	preparations for The Coronation next year

## Picture of the Week

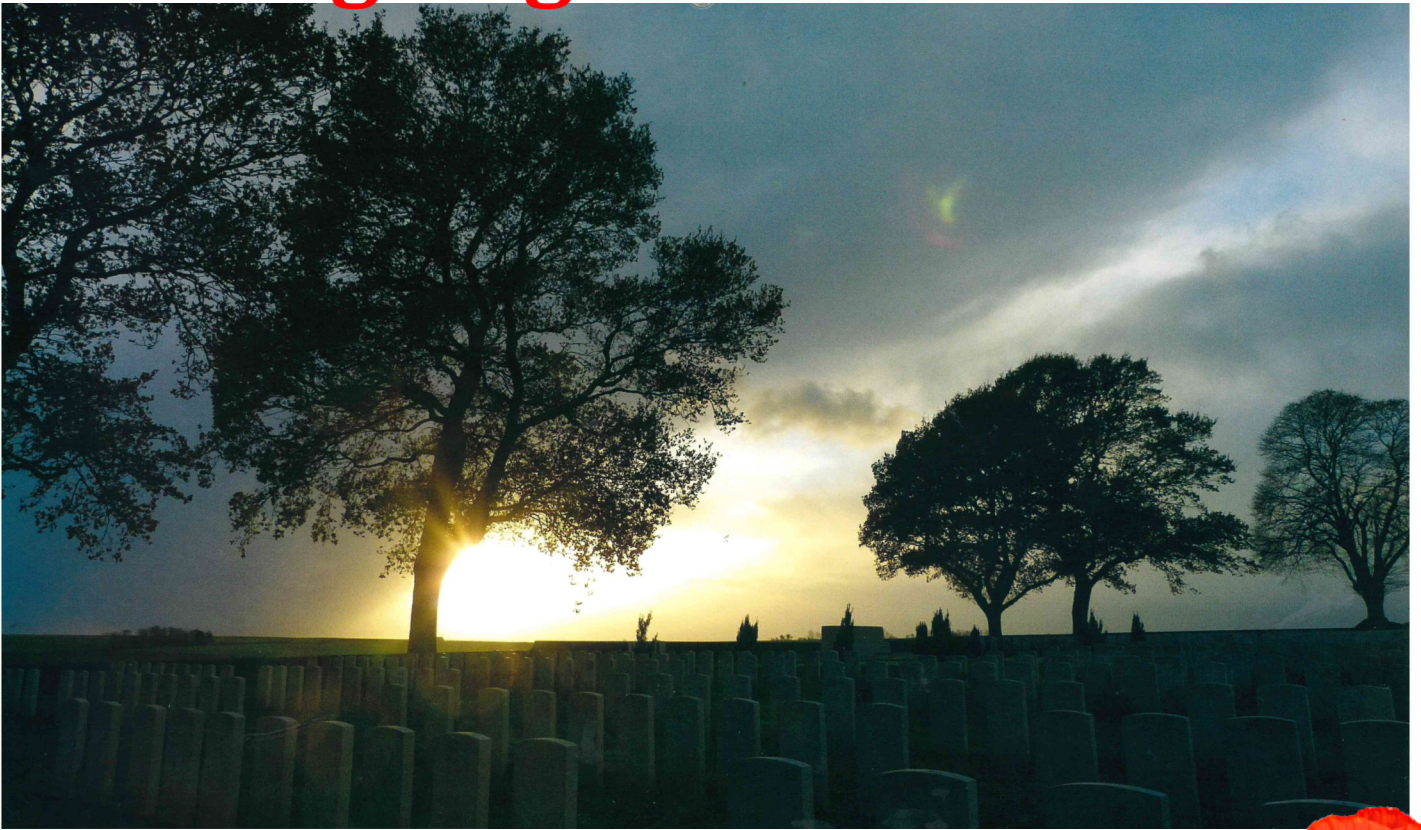
### The Blitz

### Coventry Cathedral





**At the going down of the sun...**



**...and in the morning,**



**We will remember them**





We're celebrating Maths Week England by taking part in a friendly times tables (and division) competition. The competition runs from 07:30 GMT Monday 14th November to 19:30 GMT Wednesday 16th November. It's all done online via [play.ttrockstars.com](http://play.ttrockstars.com).

Children can play in any game mode with every correct answer to a multiplication or division question, earning themselves, their class and the school a point. The Times Tables Rock Stars platform will calculate the class average (the number of correct answers per pupil in the class who play during the competition hours, subject to a daily 60-minute limit—see below). The winning classes in the school and in the competition as a whole will be the ones with the highest average.

To support player wellbeing, there is a daily time limit of 60-minutes per player. In other words, each player can earn competition points for up to 60-minutes between 07:30 GMT and 19:30 GMT on 07:30 GMT Monday 14th November to 19:30 GMT Wednesday 16th November. Once the player goes beyond 60-minutes of play on that day, they will still earn coins but will no longer earn points towards the competition.

In the spirit of the competition, please don't play on their behalf but by all means encourage and support them to the extent that it doesn't cause high stress levels or impact on family plans.



### How are we doing?



If you can spare us five minutes, we would welcome your response to our 12 questions. Just scan the code:



Thank you to the many Year 5 parents and carers who completed our survey about transition into our school. For your interest, the results are here: [Your Views - Walkwood Church of England Middle School \(walkwoodms.worcs.sch.uk\)](http://Your Views - Walkwood Church of England Middle School (walkwoodms.worcs.sch.uk))

### Prime drinks



'Prime Hydration' is an energy drink sold in Asda and is made up of 10% coconut water. The store's website states that it is a "Tropical Punch Flavour Drink with Sweeteners". Having a bottle has become something of a cult among children.

The use of energy drinks or lots of sugary sweets does not help children in the classroom. We would prefer that such items are not brought into school. The price of Prime drinks has increased considerably due to high demand, and we would recommend that you are vigilant with what children are spending pocket money on before the start of the school day.



**Walkwood**  
Church of England  Middle School

## Appointment of Teaching Assistants Grade 1 or Grade 2

Walkwood Church of England Middle School are looking to recruit Teaching Assistants.

Remuneration: Scale 1 from £ 18,333 - £ 20,444 pro rata

7 hours per day, 5 days a week, 35 hours per week, term time only plus the 5 Inset days

We would welcome applications from individuals looking to explore flexible working hours.

We are looking for patient and caring teaching assistants with an understanding of the best way to support pupils in the classroom. They will enjoy working in a team environment and demonstrate the ability to establish good working relationships with pupils acting as a role model. Previous experience is desirable for this role although not essential, together with GCSE passes in Maths and English (4+) or equivalent.

Walkwood Church of England Middle School is committed to safeguarding and promoting the welfare of children and expects all staff and volunteers to share this commitment. The successful applicant will be required to undertake an enhanced DBS check.

For full details of this position and how to apply, please visit our website at [www.walkwoodms.worcs.sch.uk](http://www.walkwoodms.worcs.sch.uk). The application deadline is 9am on Monday 21 November 2022. CVs will not be accepted.



**Walkwood**  
Church of England  Middle School

## Appointment of a Catering Assistants

Walkwood Church of England Middle School are looking to recruit 2 x Catering Assistants.

Remuneration: Scale 1 from £ 17,842 - £ 18,198 pro rata

5 hours per day, 5 days a week, 25 hours per week, term time

We would welcome applications from individuals looking to explore flexible working hours.

We are looking for a catering assistant who will enjoy working in a team environment and demonstrate the ability to establish good working relationships with pupils, acting as a role model. Previous experience is essential for this role, together with a Basic Food Hygiene Certificate.

Walkwood Church of England Middle School is committed to safeguarding and promoting the welfare of children and expects all staff and volunteers to share this commitment. The successful applicant will be required to undertake an enhanced DBS check.

For full details of this position and how to apply, please visit our website at [www.walkwoodms.worcs.sch.uk](http://www.walkwoodms.worcs.sch.uk). The application deadline is 9am on Monday 21 November 2022. CVs will not be accepted.



## INSTRUMENT LESSONS

Would your child like the opportunity to learn an instrument?

We provide tuition in a range of instruments with specialist teachers from Severn Arts.

Scan the QR code to complete an expression of interest form and find out more.



## Music Department

The Music Department would like to share the recordings we create of our students' performances and compositions.

Scan the QR Codes to take you directly to our recordings.

We hope that you enjoy listening!



Class 5C performing "What shall we do with the Drunken Sailor?"

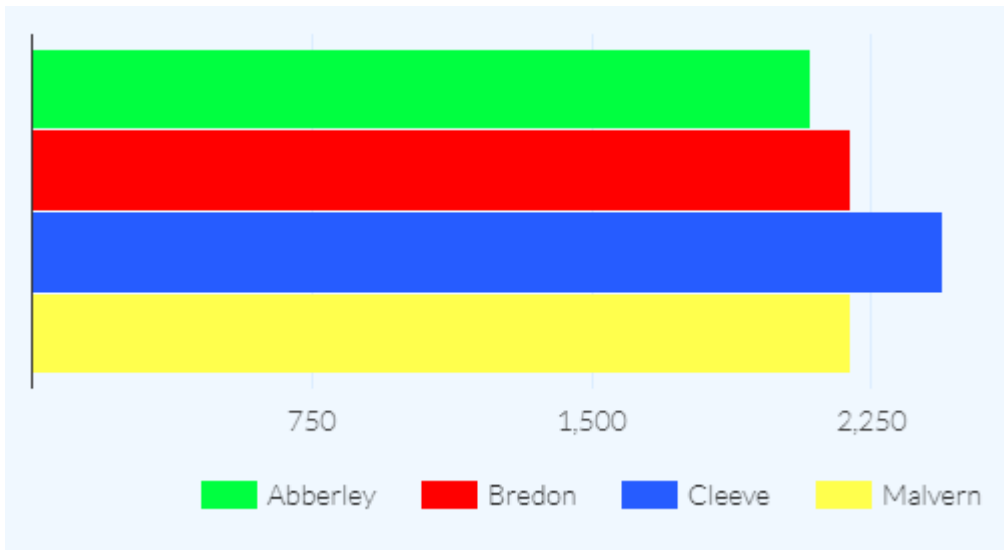
Class 8F with their own composition of film music to a scene from "Jaws". All ideas composed by the students.

The music fitted the scene wonderfully!





# epraise this week



## Top Readers for 09.10.2022 — 09.11.2022



Congratulations to:

### Top Girl

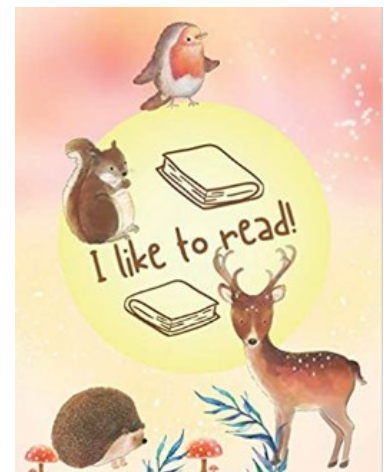
Emelia Fletcher (Year 8 ARCO) - who has read 535,856 words.

### Top Boy

Noah Hamilton-Smith (Year 7 MABE) - who has read 254,149 words.

Well done - merits will be awarded to you both.

Keep reading Walkwood, next week it could be YOU ...



# Knowing our curriculum

For information about the curriculum for each year group, please select:



[Year 5](#)

[Year 6](#)

[Year 7](#)

[Year 8](#)

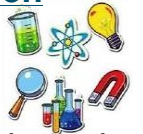


For information about specific curriculum subjects, you will find the calendars here:

[Art and Technology](#)   [Computing](#)   [Drama](#)   [English](#)   [French](#)   [Mathematics](#)

[Music](#)   [Physical Education](#)   [Science](#)   [Spiritual & Social Education](#)

Additionally, for [Careers](#)



For the overall rationale for the way we have put the curriculum together, or for how the pastoral system operates, please select:

[Curriculum Rationale](#)

[Pastoral Strategy](#)



## Walkwood

Church of England  Middle School

For information about our school:

[www.walkwoodms.worcs.sch.uk](http://www.walkwoodms.worcs.sch.uk)

## Keeping children safe

The following information concerns how we continue to ensure that pupils are cared for within our school:

Early help: <https://www.walkwoodms.worcs.sch.uk/Content/files/19c6-Early%20Help%20Offer.pdf>

E-safety: <https://www.walkwoodms.worcs.sch.uk/E-Safety>

Anti-bullying: <https://www.walkwoodms.worcs.sch.uk/Content/files/f2c9-Anti-bullying%20Policy.pdf>

Attendance: <https://www.walkwoodms.worcs.sch.uk/Content/files/53d7-Attendance%202018.pdf>

Prevent: <https://www.walkwoodms.worcs.sch.uk/Content/files/25a5-Prevent%20Policy%202019.pdf>

Safeguarding: <https://www.walkwoodms.worcs.sch.uk/Safeguarding-and-Child-Protection>

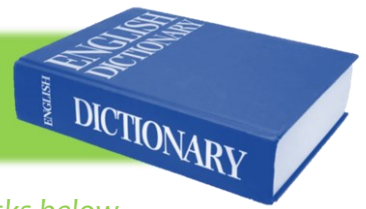
<https://www.walkwoodms.worcs.sch.uk/Content/files/a297-Safeguarding%20Policy%202019.pdf>

Relationships and Sex Education: <https://www.walkwoodms.worcs.sch.uk/Content/files/9ca0-Relationships%20and%20Sex%20Education%20Policy%202019.pdf>





# Word of the Week



Each week, there is a word displayed here. If the pupils have a go at the tasks below linked to the weekly word, they will earn a point from their tutor. Once per fortnight the tutor will go through the previous two weeks' words and pupils will work collaboratively exploring their meanings, features and usage.

## label

1. What word class is this word? Could it belong to more than one word class?
2. How many syllables does it have?
3. Write the dictionary definition(s) of this word, using your own words.
4. What are the synonyms for the word?
5. What are the antonyms for the word?
6. Write four sentences, each containing the word.

Vary the type of sentence each time: write one as a statement; one as a question; one as a command and one as an exclamation sentence.

For example, if the *Word of the Week* were *exhilarated*:

**Statement:** Sam is feeling exhilarated this morning.



# Clubs and Activities



## Autumn Term 2

	Before School 7:45am – 8:45am	Lunchtime 12.15 – 1.00pm	After School 3:30pm – 4:45pm
<b>Monday</b>		Lunch Club, Room 20, duration of lunch, KCR/ CMI  Lexia Club ITA Miss Walker	KS2 Boys and Girls multi sports club RDJ/ PMC Meet in changing rooms Sign up only
<b>Tuesday</b>		Lunch Club, Room 20, duration of lunch, KCR/ CMI  Choir, Music Room, GLA, 12.35pm-1pm. All welcome. First sitting lunch pass required. See Mrs Laish- ley to sign up.	Keyboard Club, Music Room, GLA. Sign up only. 10 spaces available.
<b>Wednesday</b>		Lunch Club, Room 20, duration of lunch, KCR/ CMI  Reading club, room 18, duration of lunch, JWa  Lexia Club ITA Mrs Shanley	Year 7 & 8 fitness club. Parental permission and sign up needed Meet in the changing rooms RMA & LWO Last session Wednesday 7 <sup>th</sup> December  KS2 boogie bounce Sign up only Meet in changing rooms KRE Last session Wednesday 7 <sup>th</sup> December  Year 5-8 STEM Club. (Lab 1) current group to continue until 7 <sup>th</sup> Dec FCI
<b>Thursday</b>		Lunch Club, Room 20, duration of lunch, KCR/ CMI  Science Homework Drop In – Computing (Year 7 and 8)	Year 5 & 6 fitness club. Parental permission and sign up needed Meet in the changing rooms CHU & PMI <b>(No club on Thursday 24<sup>th</sup> November due to staff meeting)</b> Last session Thursday 8 <sup>th</sup> December  Ks3 Boogie Bounce club Sign up only Meet in changing rooms KRE <b>(No club on Thursday 24<sup>th</sup> November due to staff meeting)</b> Last session Thursday 8 <sup>th</sup> December  Year 5-8 Art Club. Puppetry and Xmas Gongs. First come first serve basis. 12 spaces availa- ble. Parental permission and sign up needed. Starts 29 <sup>th</sup> September - 8th December MGR  <b>(No club on Thursday 24<sup>th</sup> November due to staff meeting)</b>  Yr5-8 Drama club. 30 spaces available. Paren- tal permission and sign up needed. Starts 10 <sup>th</sup> November. PAL & DDE  <b>(No club on Thursday 24<sup>th</sup> November due to staff meeting)</b>
<b>Friday</b>		Lunch Club, Room 20, duration of lunch, KCR/ PWE	

**No clubs on Thursday 24<sup>th</sup> November due to staff meeting.**



# Trips and Visits



Date	Year group	Destination	Day trip?	Residential?	Cost
07/07 - 10/07/2023	5 <sup>•</sup>	Brecon Beacons Activity Centre		✓	£250
12/05/2023	6	Blackwell Adventure	✓		£38 <sup>*</sup>
30/06 - 03/07/2023	7	Osmington Bay Activity Park		✓	£285
19/07/2023	8	Drayton Manor	✓		£40 <sup>*</sup>
04/02 - 11/02/2023	6,7,8 <sup>•</sup>	Obertauern, Austria		✓	£1360

<sup>•</sup> Fully booked

<sup>\*</sup> Current estimated cost





# Looking ahead



	Date	Event
2022	Monday 14 November	Parents Maths KS2 Workshop 6.30-7.30pm
	Friday 16 December	<b>End of Term</b>
	Tuesday 3 January	<b>Staff Development Day</b>
	Wednesday 4 January	First day of the Spring Term
	Monday 9 January	Parents English KS2 Workshop 6.30-7.30pm
	Thursday 19 January	Y6, Y8 Parents' Evening 4.00 -7.00pm
	Wednesday 25 January	Y6, Y8 Parents' Evening 4.00 -7.00pm
	Monday 20– Friday 24 February	<b>Half Term</b>
	Friday 31 March	<b>End of Term</b>
	Monday 17 April	<b>Staff Development Day</b>
2023	Tuesday 18 April	<b>First day of the Summer Term</b>
	Monday 29 May - 2 June	<b>Half Term</b>
	Thursday 8 June	Y5, Y7 Parents' Evening 4.00 - 7.00pm
	Wednesday 14 June	Y5, Y7 Parents' Evening 4.00 - 7.00pm
	Friday 21 July	<b>End of Term</b>